



Apt 808, Grove House, Skerton Street, Manchester, M16 0WJ

This brand new one-bedroom apartment on the top floor of Grove House is already tenanted and ready to view.

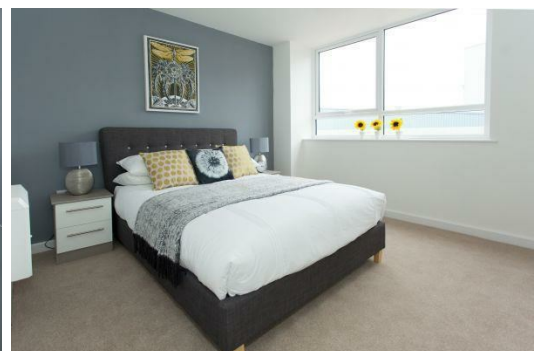
The apartments in Grove House are truly designed for today's modern city living.

Architects have designed each apartment with today's discerning tenant in mind, offering well planned accommodation with enough room to socialise and live. The contemporary fixtures and fittings are designed specifically for Grove House to provide a modern and resilient finish to each apartment.

All apartments come with a fully-fitted kitchen, fitted bath/shower room, all flooring and quality finishes.

Based just a 10 minute tram ride away from the heart of the city, Grove House is located in the established residential area of Old Trafford, providing a mix of 98 modern one and two bedroom apartments.

Get in touch to view today.



Energy Efficiency Rating		
	Current	Potential
<i>Very energy efficient - lower running costs</i>		
(92 plus) A		
(81-91) B		
(69-80) C		
(55-68) D		
(39-54) E		
(21-38) F		
(1-20) G		
<i>Not energy efficient - higher running costs</i>		
England & Wales	EU Directive 2002/91/EC	

Environmental Impact (CO ₂) Rating		
	Current	Potential
<i>Very environmentally friendly - lower CO2 emissions</i>		
(92 plus) A		
(81-91) B		
(69-80) C		
(55-68) D		
(39-54) E		
(21-38) F		
(1-20) G		
<i>Not environmentally friendly - higher CO2 emissions</i>		
England & Wales	EU Directive 2002/91/EC	

