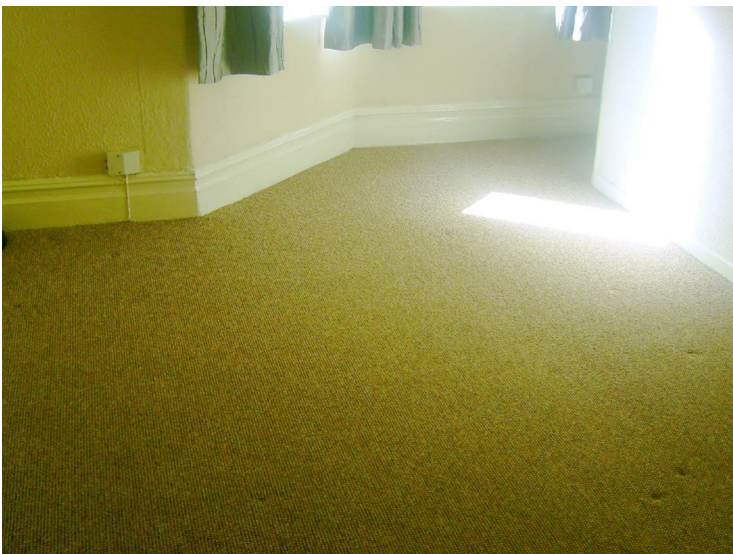


3 Glendale Road, Eccles, M30 9AQ



£395 Per calendar month

If you are looking for a chap named Glen or Dale you've come to the wrong place, but what I can give you is a one bedroom flat to rent in the converted Glendale building. With its high ceilings and old charm this building feels like home, yet the individual rooms offer a low maintenance rental. Sat on the 1st floor of the building is this fine one bedroom apartment, internally you will find a living area, a more than workable kitchen space, (with no washer facilities) and a bathroom and you'll be snug in the knowledge knowing that your gas central heating is included in your rent. Glendale is set on the cusp of the charming, sought after Ellesmere Park, with the hub of Monton Village and all of its pleasantness moments away, you'll be spoilt for choice here. Public transport links are also pretty nifty with bus routes near by and the train and metro running from Eccles Town Centre, along with the M602 close at hand for all who drive. The location is good, the apartment is good and the price is good what more can we say. AVAILABLE END OF SEPTEMBER! *FEES APPLICABLE PLEASE CONTACT THE OFFICE*

External



Living Room



Kitchen



Bedroom



Bathroom



