

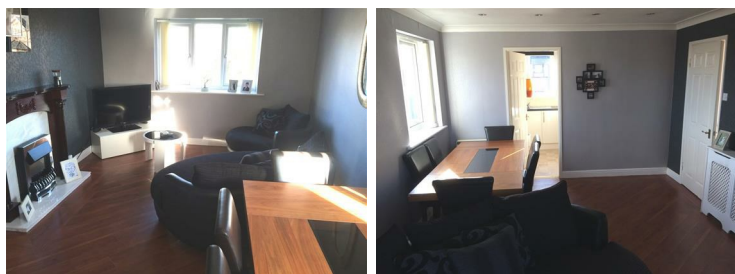
Kirkstile Place, Clifton, M27 6WT



Guide price £84,950

FANTASTIC TOP FLOOR APARTMENT. We are delighted to offer this 2nd floor flat on the desirable Kirkstile Place development. The large 18FT lounge / diner has double aspect windows, fitted spotlights and a fireplace and surround. The separate kitchen is modern in design with brand new gloss units, black worktops and an integrated oven and hob. There are 2 bedrooms, the master having fitted wardrobes and a 2nd single bedroom. The spacious bathroom has a 3 piece suite with electric shower fitted over the bath. UPVC double glazing and electric economy 7 heating throughout. Externally there is residents parking, a communal entrance and grassed well maintained gardens surrounding the development. Great location just off Manchester Road and close to Motorway network. Please call Barlow White on 01617880909 to arrange viewings or for more information.

Lounge
18'4x11'4 (5.59mx3.45m)



Double aspect windows. Laminate flooring. Electric fire and surround. Radiators and power points.

Kitchen
8'5x7'10 (2.57mx2.39m)



White gloss kitchen with silver fixings. Tiled flooring.

Bedroom 1
12'3x9'5 (3.73mx2.87m)



Carpeted throughout. Fitted wardrobes. Radiator and power points.

Bedroom 2
8'4x7'10 (2.54mx2.39m)

Carpeted throughout. Radiator and power points.

Bathroom
7'8x6'7 (2.34mx2.01m)



Bath with shower over, sink and wc. Tiled walls and lino flooring.

External



Car parking at side of development. Surrounding grassed gardens. Communal entrance.

