

## Westcliffe, Eccles, M30 9GW



**£525 Per calendar month**

Allow the compass point to guide you here....North, East, South then West to Westcliffe. Once you find your way here you wont look back. Being one of the more prevalent developments within the Monton / Eccles area this is sure to be snapped up in no time. Just a short stroll away you will find yourself in the hub of the bustling Monton Village, a real up and comer, the place to be some would say with its independent bars, eateries and shops. Should you need to leave the area you will find that easy peasy too, as there are bus routes, trains and the metro all running near by. The apartment itself sits on the 1st floor and offers you a lovely living space, with a living room, kitchen (with appliances) one double bedroom, one single bedroom and a bathroom. As with most apartments you will find a parking space, secure entry to the development and lift facilities, all making it that little bit easier. A very appealing rental at an attractive price. AVAILABLE MID APRIL! \*FEES APPLICABLE PLEASE CONTACT THE OFFICE\*

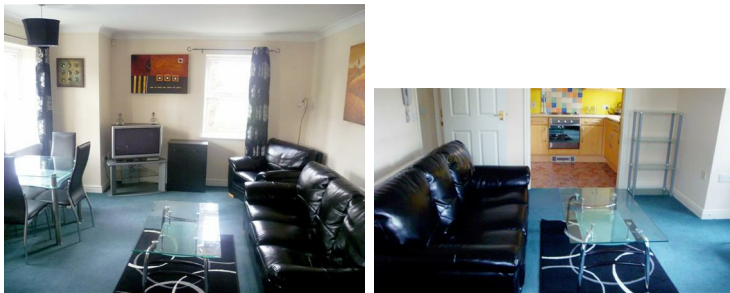
### Bathroom



### External



### Living Room



Large living area with 2 windows,

### Bedrooms





