

## Claremont Road, Salford, M6 7NW



**£500 Per calendar month**

What can we say about Claremont Road? Plenty! Its got the location, being sat in the hub of a hugely popular residential area within Salford 6, there are lovely terraced roads to meander around and outdoor playing fields with Lightoaks Park and Oakwood Park a hop, skip and a jump away for open - air merriment. There are good transport links from here too with buses taking you into Manchester City Centre, for those who drive the A580 is close at hand too. For your daily amenities you have a major supermarket, local shops and fast food establishments not too far away. Next you have the actual property, which is a first floor two bedroom apartment set out over 2 floors, the home was previously one that has been converted into two separate living spaces over time. Internally you have a well sized living area, with a fitted kitchen and a very workable bathroom, all in all this is quite a roomy property. And finally you have the price, its an absolute steal, priced attractively and not to be missed. AVAILABLE NOW! \*FEES APPLICABLE PLEASE CONTACT THE OFFICE\*

### External



### Living Area



Neutral painted walls with wood look flooring

### Kitchen



Neutral paintwork and white splashbacks. Dark worktops and light wood coloured wall and base units

### Bedroom 1



White painted walls with feature walls wall papered. Wood look flooring.

### Bedroom 2



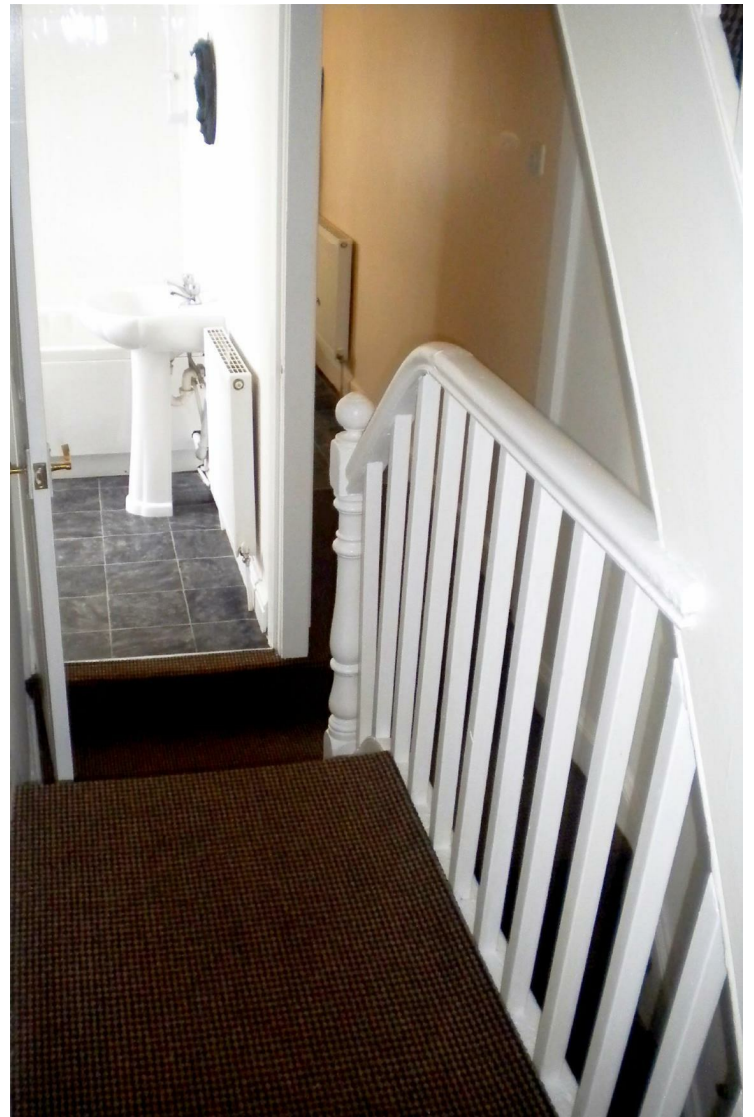
White painted walls with feature wall, wall papered. Dark flooring carpeted

### Bathroom



Dark flooring, white 3 piece suite, neutral painted walls with white splashbacks

### Hallway



Dark carpeted flooring. White paintwork and neutral painted walls

