

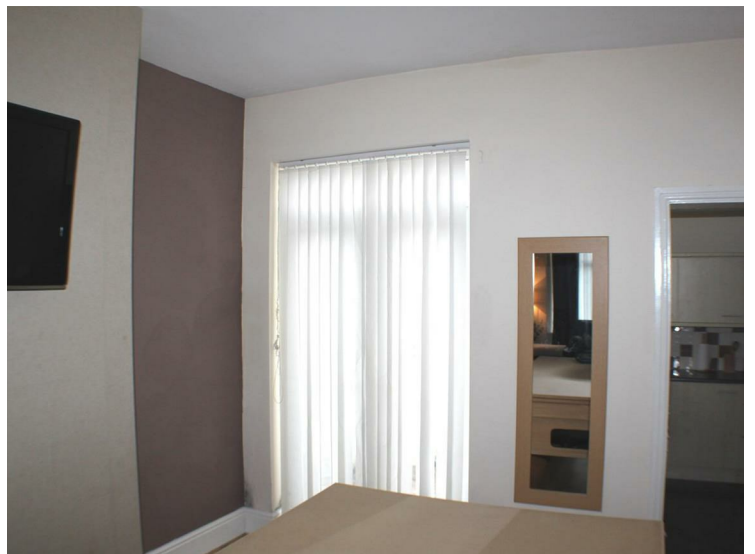
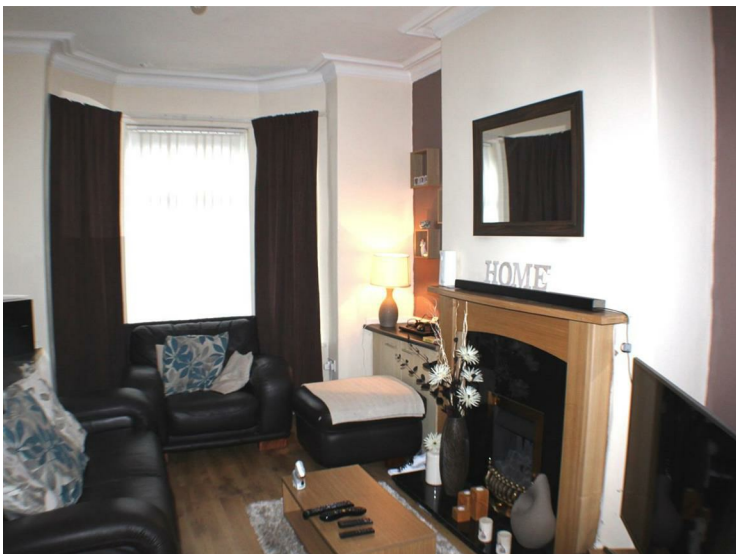


REGISTERED OFFICE

27 MONTON GREEN, MONTON,
MANCHESTER M30 9LL
Tel: 0161-788 0303 Fax: 0161-788 0330

www.barlowwhite.co.uk rentals@barlowwhite.co.uk

Worsley Road, Eccles, M30 8BW



Offers over £110,000

****SPACIOUS**TWO DOUBLE BEDROOMS**** mid terraced property, located close to WORSLEY and MONTON Villages & WINTON PARK. In brief the property comprises of a hall, lounge, dining room, kitchen, bathroom and 2 double bedrooms. Other benefits are a rear garden, a garage, Upvc double glazing and gas central heating. The location also has great access to the motorway and public transport links, and within walking distance to local amenities. **VIEWING IS HIGHLY RECOMMENDED. CALL BARLOW WHITE ON 0161 7880909 TO ARRANGE A VIEWING.**

Lounge
14'1 x 10'8 (4.29m x 3.25m)



Front aspect bay window, laminate flooring, living flame gas fire with a wood and marble surround. Tv point and radiator.

Dining Room
12'1 x 11'3 (3.68m x 3.43m)



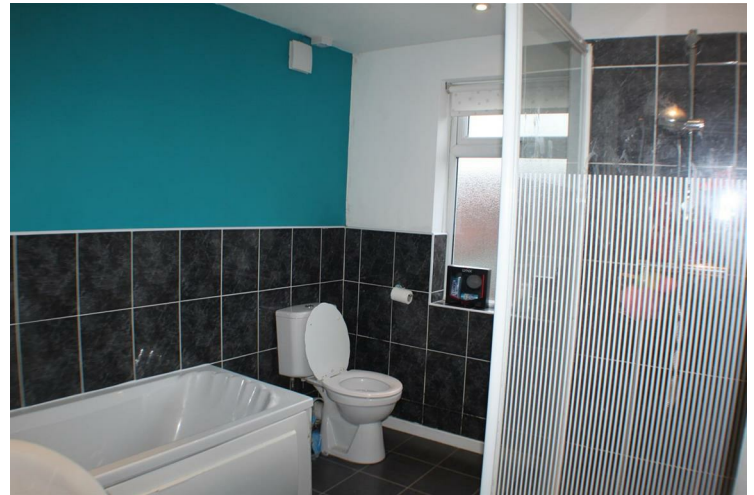
Patio doors to the rear, laminate flooring and radiator.

Kitchen
8'11 x 7'9 (2.72m x 2.36m)



With floor standing and wall mounted units in beech with a co-ordinating work surface and stainless steel sink and drainer. A gas hob and electric oven with extractor hood, and space for a washer and fridge / freezer. A laminate floor, tiled walls and side facing window.

Bathroom
9'1 x 7'11 (2.77m x 2.41m)



A 4 piece white bathroom suite with chrome fittings comprising of a bath, pedestal sink, w/c and a freestanding shower. Part tiled.

Bedroom One
14'3 x 11'11 (4.34m x 3.63m)



Front aspect window, radiator and Tv point.

Bedroom Two
13'6 x 9'7 (4.11m x 2.92m)



Rear aspect window and radiator.

