

Winifred Street, Eccles, M30 8PG



Or nearest offer £67,000

****CALLING ALL INVESTORS AND FIRST TIME BUYERS**NO CHAIN**GREAT PRICE**** Barlow white are pleased to bring to the market this 2 Bedroom Terraced House * Close To Motorway Networks & Trafford Centre * The Property Briefly Comprises Of * Lounge * Kitchen/Diner * One Double Bedroom * One Single Bedroom * Bathroom With Shower Over Bath * Gas Central Heating * UPVC Double Glazing * Rear Yard * To arrange a viewing please call Barlow White on 0161 7880909.

Living Room
10'1 x 11'4 (3.07m x 3.45m)



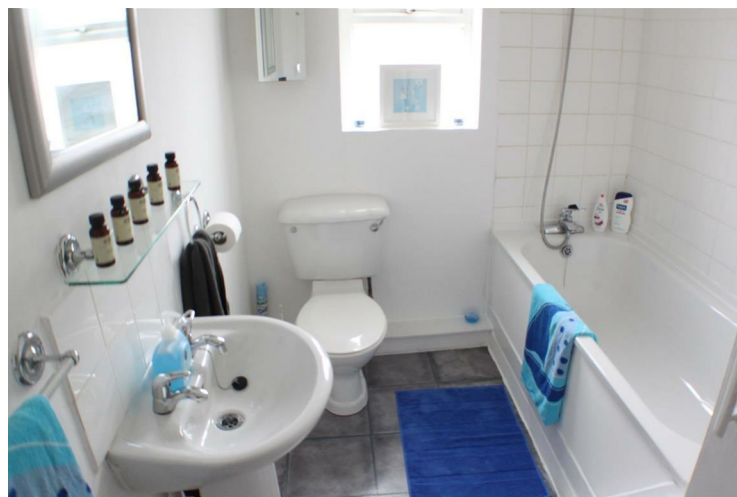
Front facing window.

Kitchen
11'7 x 9'0 (3.53m x 2.74m)



Floor standing and wall mounted units with a stainless steel sink and drainer. Electric oven and hob with appliance space, a rear window and rear external door and lino flooring.

Bathroom
6'1 x 8'3 (1.85m x 2.51m)



Three piece bathroom suite comprising of bath with shower over head, pedestal sink and w/c with chrome fittings. A rear facing window and radiator.

Bedroom One
11'6 x 10'3 (3.51m x 3.12m)



Front facing window, radiator and carpet flooring.

Bedroom Two
5'1 x 11'0 (1.55m x 3.35m)



Rear facing window, radiator and carpeted flooring.

