



REGISTERED OFFICE

27 MONTON GREEN, MONTON,
MANCHESTER M30 9LL
Tel: 0161-788 0303 Fax: 0161-788 0330

www.barlowwhite.co.uk rentals@barlowwhite.co.uk

Lyndhurst Street, Salford, M6 5YB



£600 Per calendar month

You may just burst for Lyndhurst. This is a lovely home sat on a classic northern street with rows of well looked after terraced homes that stand proudly within this hugely popular residential area of Salford 6. This is a cracking location, you have Salford Royal Hospital close by, Buile Hill Park on hand for a little outdoor greenery and excellent transport links with the metro running along Eccles New Road, the M602 minutes away and several bus routes to pick from on Liverpool Street and Langworthy Road. For those daily needs you have the larger well known supermarkets close by and the odd local shop and take out too. The house is a pleasing two bedroom terraced, with two nicely sized reception rooms, a more modern look kitchen with appliances, a partially tiled bathroom and a touch of your own outdoor space with a rear yard. As far as rental opportunities go this is right up there. AVAILABLE BEGINNING OF OCTOBER!
FEES APPLICABLE PLEASE CONTACT THE OFFICE

External



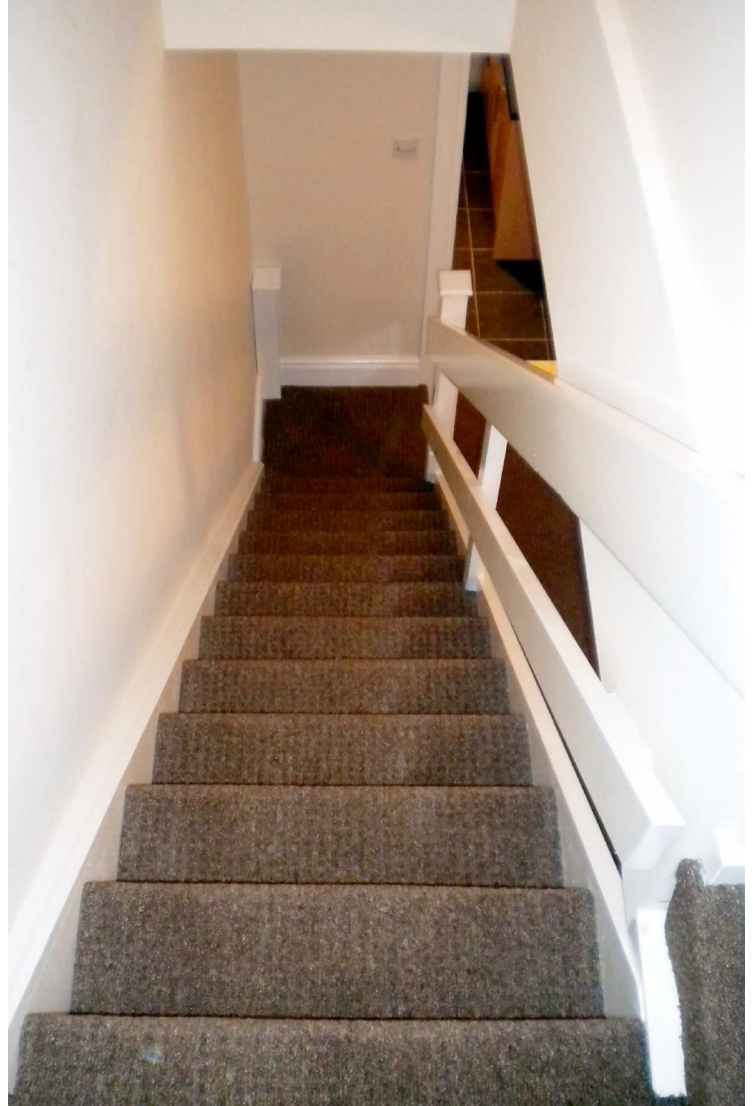
Kitchen



Reception Rooms



Stairs



Bathroom



