

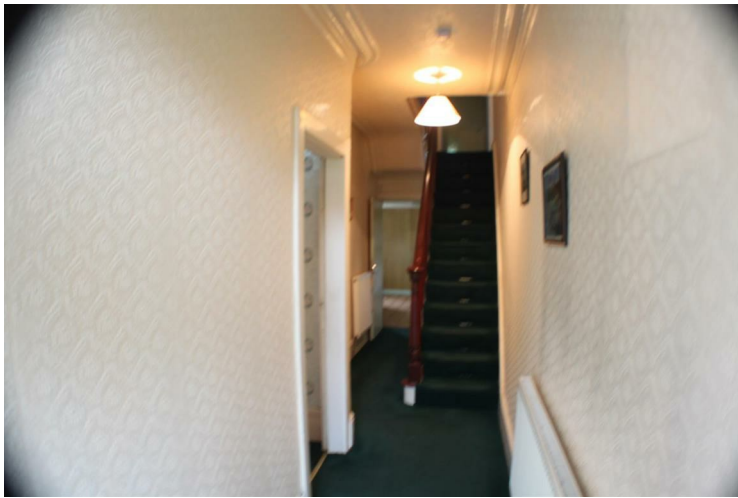
New Lane, Manchester, M30 7JL



Offers over £160,000

**** NO CHAIN ** SPACIOUS PROPERTY ****
Barlow White are delighted to bring to the market this BAY FRONTED PERIOD PROPERTY offering spacious accommodation including 3 BEDROOMS and LARGE GARDENS to the FRONT, SIDE and REAR. Downstairs the property comprises of 2 RECEPTION ROOMS, 18ft KITCHEN and CELLARS, upstairs there are 3 BEDROOMS and a SHOWER ROOM. The property is ideally located close to excellent local schools, local amenities, public transport and major motorway access. The property also benefits from GAS CENTRAL HEATING and UPVC windows. To arrange a viewing please call Barlow White on 01617880909/

Hallway



Spacious hallway with power points and alarm.

Reception room 1 14'4 x 10'11 (4.37m x 3.33m)



Bay window with glass living flame fire. Power points, TV point and radiator.

Reception room 2 12'2 x 10'3 (3.71m x 3.12m)



Open fire with hearth. Power points and radiator.

Kitchen 18'11 x 12'2 (5.77m x 3.71m)



Wall mounted and floor standing cupboards. Side window and external door. Stainless steel drainer. Radiator.

Shower room 9'1 x 7'8 (2.77m x 2.34m)



Shower room

Bedroom One
15'2 x 12'2 (4.62m x 3.71m)



Dual aspect windows to front. Tiled fire place. power points and radiator.

Bedroom Two
12'1 x 10'11 (3.68m x 3.33m)



Rear aspect window, Cast iron fire surround, power points and radiator.

Bedroom Three
10'5 x 10'5 (3.18m x 3.18m)



Power points, radiator and Cast iron fireplace

