

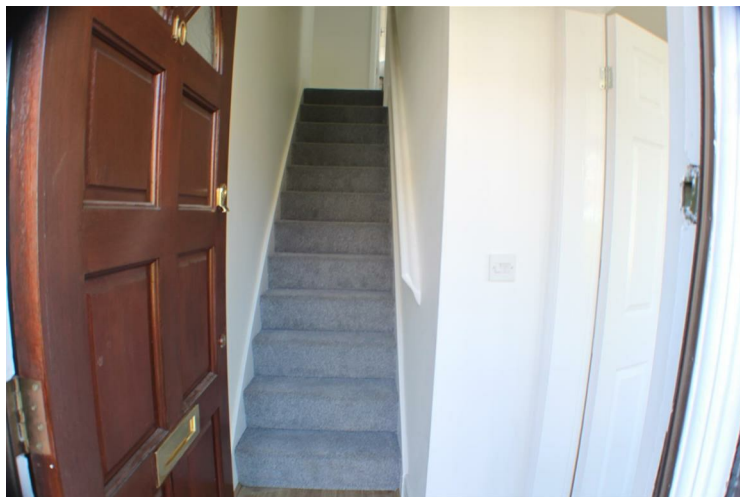
## Bradburn Avenue, Manchester, M30 0NH



**£133,950**

**\*\* NO CHAIN \*\* FULLY RENOVATED \*\* PRIVATE GARDENS \*\* CALLING ALL INVESTORS & FIRST TIME BUYERS \*\*** Barlow White are pleased to bring to the market this 3 bedroom end terrace. Internally the property briefly comprises of ENTRANCE HALLWAY, LOUNGE, DINING ROOM & NEWLY FITTED KITCHEN to the ground floor and upstairs 3 BEDROOMS & NEWLY FITTED FAMILY BATHROOM. The property has recently undergone an extensive renovation including NEW ROOF, RE-WIRE, DOUBLE GLAZED UPVC WINDOWS, GCH to the upstairs, RE-PLASTER, NEW KITCHEN, NEW BATHROOM & RE-DECORATION. Externally to the rear there is a private enclosed garden that benefits from not being overlooked, and to the front a paved enclosed garden with gate. Ideally located for access to TRAFFORD CENTRE, SALFORD QUAYS / MEDIA CITY & a short commute to MANCHESTER CITY CENTRE with good transport links including tram, train, bus and motorway networks. **THIS PROPERTY WILL SELL.** To arrange a viewing please call Barlow White on 0161 7880909

**Entrance Hall**



With radiator.

**Reception One**  
15' x 11'2 (4.57m x 3.40m)



Power points, Tv aerial, radiator, square bay window to the front aspect, laminate flooring and inset space for electric fire.

**Reception Two**  
14'5 x 7'8 (4.39m x 2.34m)



Power points, radiator, rear aspect window, laminate flooring, under stairs storage and open plan into kitchen.

**Kitchen**



Floor standing and wall mounted units in cream high gloss with black co-ordinating work surfaces and stainless steel sink & drainer. Dual aspect windows to the side and rear, and side facing external door. Gas hob with electric oven and extractor hood. With room for appliances and part tiled.



### Bathroom



Three piece bathroom suite including bath, pedestal sink and w/c with towel radiator, rear facing window, and fully tiled walls / floors.

### Bedroom One

**12' x 8'13 (3.66m x 2.44m)**



Double room with radiator, power points, carpeted flooring and front aspect window.

### Bedroom Two

**8'10 x 7'9 (2.69m x 2.36m)**



Single room with power points, radiator, carpeted flooring and rear aspect window.

### Bedroom Three

**8'3 x 5'9 (2.51m x 1.75m)**



Single room with power points, radiator, carpeted flooring and front aspect window.

