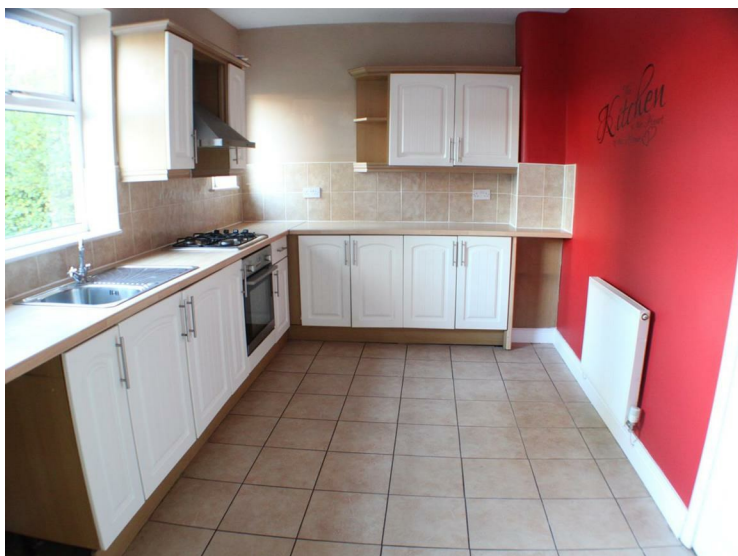


Cranbrook Road, Manchester, M30 8DU



Offers over £89,999

3 DOUBLE BEDROOM MID TERRACE FAMILY HOME OR INVESTMENT. We are delighted to offer for sale this spacious family home in a popular residential location close to Worsley and Monton villages. The property boasts a spacious lounge and a large family kitchen with integrated oven and gas hob and a large storage space to the side. There are three double bedrooms and a family bathroom. Externally there is a rear grassed garden and raised decked area and off road parking to the front. Excellent links to motorway network. Double glazing and gas central heating throughout. There is **NO CHAIN** attached to this property. Call Barlow White on 01617880909 to arrange viewings.

Living Room
15'10x11'8 (4.83mx3.56m)



Window to front aspect. Dark wood laminate flooring. Power and tv points. Radiator.

Kitchen
15'11x8'10 (4.85mx2.69m)



White floor standing and wall mounted units with silver handles and wooden worktops. Integrated gas hob and electric oven. Silver sink and drainer. External door and window to rear. Tiled floor and part tiled walls. Boiler. Large storage cupboard.

Bedroom 1



Double bedroom carpeted throughout. Window to front. Radiator and power points.

Bedroom 2
11'1x9'6 (3.38mx2.90m)



Double bedroom carpeted throughout. Window to rear. Radiator and power points.

Bedroom 3
11'4x7'4 (3.45mx2.24m)



Double bedroom carpeted throughout. Window to front. Radiator and power points.

Bathroom
6'0x5'11 (1.83mx1.80m)



White 3 piece suite with shower over bath and silver fixings. Tied floor and part tiled walls. Radiator. Window to rear.

External



Decking and lawn to rear. Off road parking to front aspect.

