

## Gillingham Road, Manchester, M30 8NA



**£795 Per calendar month**

Yes folks we have another on Gillingham Road and this really is a super rental. Sat on a suburban residential cul - de - sac with views over the roof tops of a lovely local park you have quite setting here. Not to mention the good local school and daily conveniences that can be found within a skipping distance of the house. Winton is now a village in its own right and its bursting with a residential feel and charm, it also rubs shoulders with Worsley and Monton Villages which are highly desired areas. The property itself is a newly refurbished and extended delightful semi detached family home, so there is plenty on offer here, throughout it is fresh and modern with pleasing room sizes, as you enter you are greeted by the dining room which is a large open plan area leading you into the living room which is perfect for an evening of relaxation,, the kitchen is sleek and contemporary with bags of space and natural light bouncing through, upstairs you have four good bedrooms, two of which are nicely sized doubles, one which is a little more snug but can most likely squeeze a small double in and one single bedroom, along with an attractive tiled bathroom and a separate toilet. Now for the outside, you have a great sized family garden, with defined areas, decking to while away a summers evening, paving and lawn ideal for playing fun outdoor games. Not to mention the massive bonus of having off road parking which we all know is right handy when coming home in the evening and you also have the option of taking the property on a furnished / unfurnished basis. What more could you need? I know I know it sounds too good to be true but it really isn't so you better hurry up and view. **AVAILABLE NOW! \*FEES APPLICABLE PLEASE CONTACT THE OFFICE\***

**Kitchen**



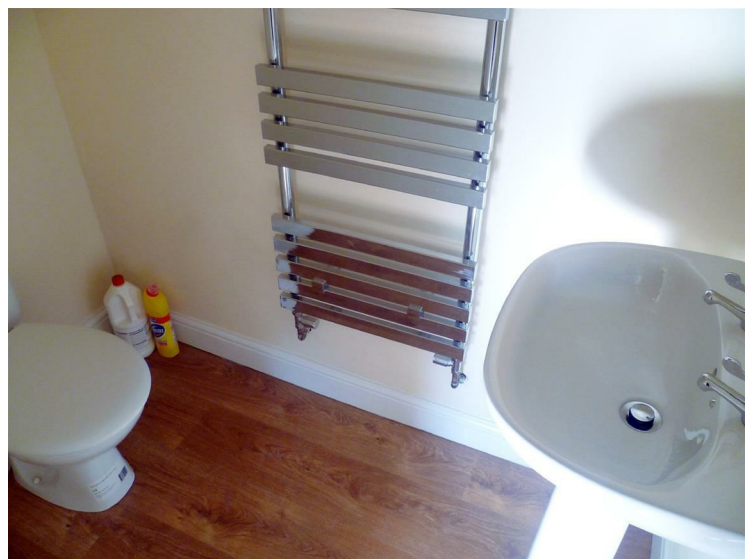
**Bedrooms**



**Bathroom**



**WC**



**External**



**Reception Rooms**

