

## 254a Worsley Road, Manchester, M27 0YF



**£2,500 Per calendar month**

When a home is known by one name you know it means business and Dales Brow House certainly does. This is a truly desirable, luxury filled family home, providing great privacy as it is set back a touch from the road with a graveled driveway leading to the magnificent property. Where to start with such a house, it is a beautiful split level, detached home with 5 bedrooms, to say it's spacious is a somewhat of an understatement. As you wander through the home you will find that it offers a lot more than a traditional detached home, the split level living, with terraces galore make this a truly unique property. We don't want to give too much away so briefly you will find, a bright, large, living room leading outside to your terrace, a lovely expansive kitchen / dining area which is so tastefully done that it will be a pleasure to spend time in, the main bedroom has a walk in wardrobe area, yes a walk in wardrobe along with its own en - suite and access to the terrace so it really is your own place to rest and relax. The terrace also adjoins another room, there are three further bedrooms all with en - suites and a downstairs bedroom with an en - suite which is accessed via the staircase in the living room. Outside you have what can only be described as an impressive, private, lawned garden that is absolutely perfect for whiling away the summer evenings. Dales Brow is set in a super location too, with Worsley Village a stones throw away and Monton Village minutes away you are set in sought after picturesque locale. Not to mention the great local facilities on offer, such as good schools, daily conveniences and handy transport links. This house has it all, bags of personality, charm and a quiet grandeur that can truly only be appreciated once seen. AVAILABLE AUGUST!  
 \*FEES APPLICABLE PLEASE CONTACT THE OFFICE\*

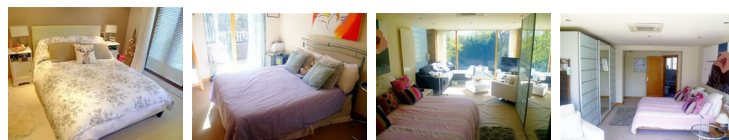
### Living Room



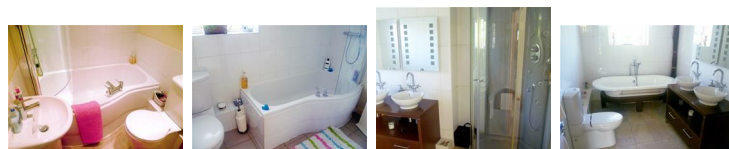
### Kitchen / Dining Room



### Bedrooms



### Bathroom / En Suite



### Terrace



### Walk In Wardrobe

### External





